



LEASE RATE:

\$1,300.00/PER MONTH

(INCLUDES UTILITIES/NO JANITORIAL)

AVAILABLE SUITE:

- First Floor: 1,500+ SF Office Suite
(Floor Plan Page 2)
 - Large reception area
 - Secretarial area
 - One private office
 - Large open area
 - Conference room
 - Storage room
 - One restroom
- Rental rate includes utilities; janitorial service not included

LOCATION OVERVIEW

- Subject property is located downtown Macon on Cherry Street between Third Street and Martin Luther King Jr. Blvd.
- Within walking distance to restaurants, shopping, banks, government offices, Federal Courthouse and Bibb County Courthouse

PROPERTY OVERVIEW

- Building is closed on WEEKENDS
- Open week days Monday—Friday, 8AM - 6PM
- Parking available in rear of building for \$40.00 per month, per space
- Rental rate does not include Janitorial service
- One - three year lease available

HAL HARPER
478.951.3991 Cell
hharper@cbcgeorgia.com

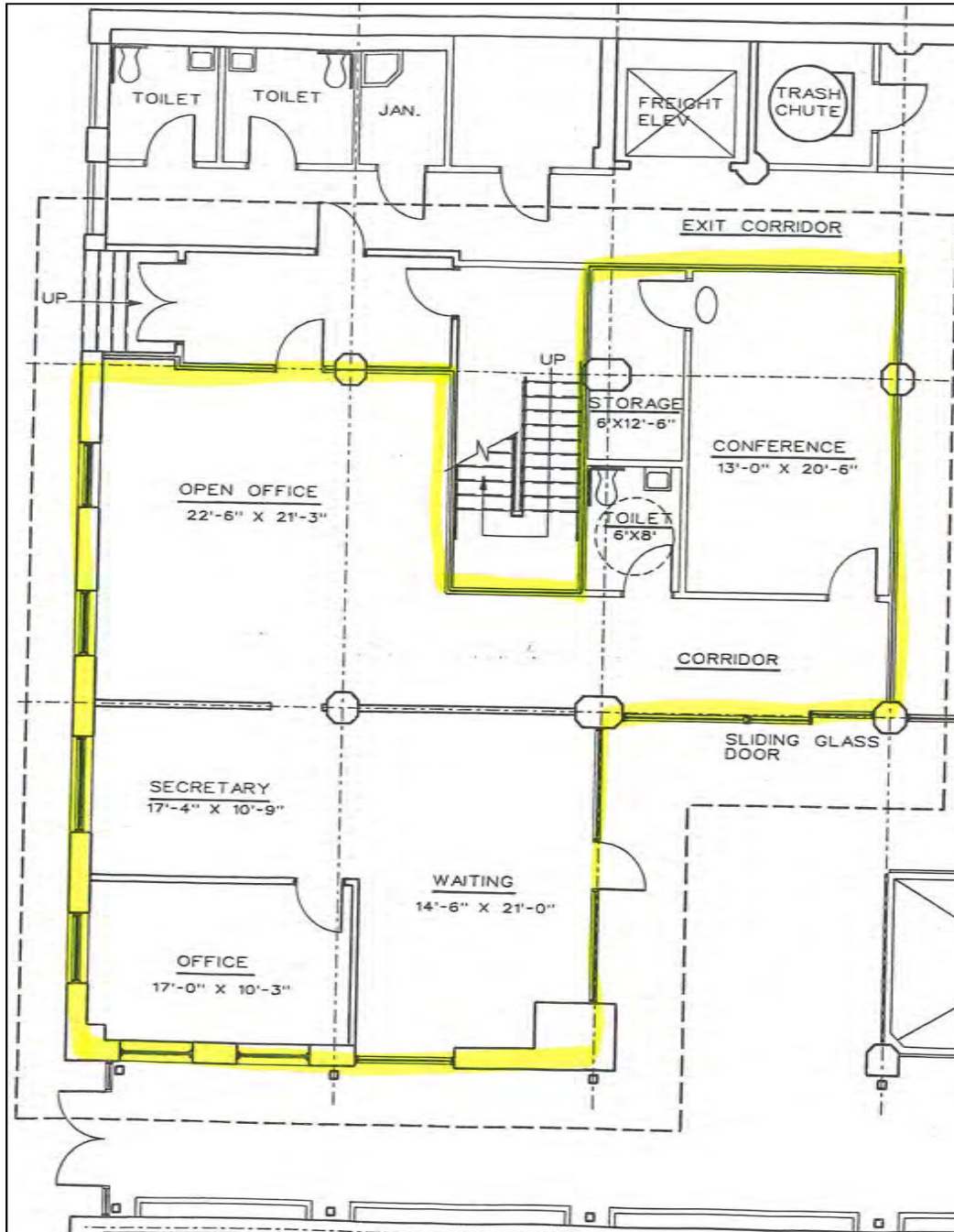


**COLDWELL BANKER
COMMERCIAL**
EBERHARDT & BARRY

990 RIVERSIDE DRIVE • MACON, GA 31201 • 478.746.8171 • CBCMACON.COM

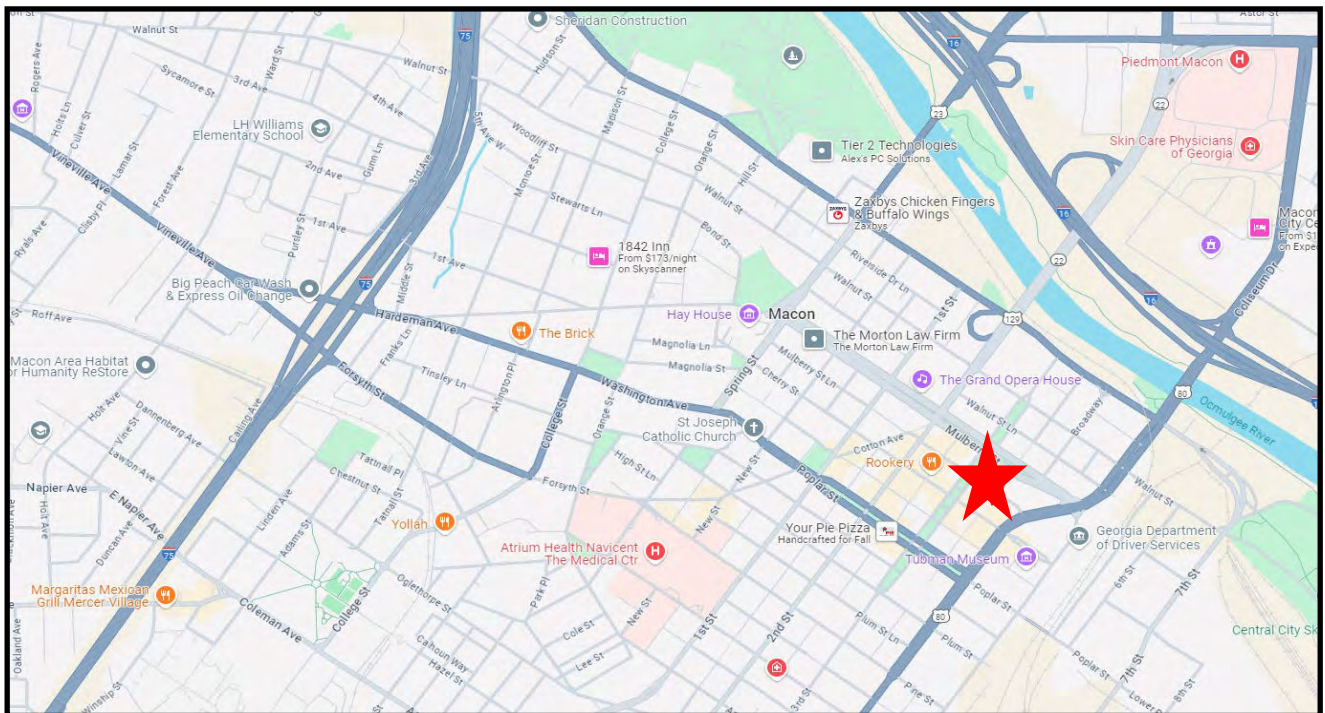
Revised 10/23/24

FLOOR PLAN - FIRST FLOOR - 1,500± SF



LEASE

THOMAS JEFFERSON BUILDING 433 CHERRY STREET, MACON, BIBB COUNTY, GA 31201



HAL HARPER, CCIM
478.951.3991 Cell
hharper@cbcgeorgia.com



**COLDWELL BANKER
COMMERCIAL**
EBERHARDT & BARRY

990 RIVERSIDE DRIVE • MACON, GA 31201 • 478.746.8171 • CBCMACON.COM