

# LEASE

OFFICE

2948 Vineville Avenue - Macon, Bibb County, GA 31204



**LEASE RATE: \$1,500/MONTH**

## LOCATION OVERVIEW

- High traffic location across from Georgia Academy of the Blind
- Average Daily Traffic Count: 14,700± VPD
- Convenient to Interstate 75 & downtown Macon
- Neighbors: Denver's Salon, Middle Georgia Endodontics, Jim Shaw's Seafood, Ingleside Bridals & Formals, Suttles Flooring, Layers Bakery, American Favs

## PROPERTY OVERVIEW

- 1,200± SF Office
  - Floor plan consists of:
    - Lobby/Conference Room
    - Four (4) private offices
    - Breakroom/Kitchen
    - Four (4) storage closets
    - Restroom
    - Covered front & rear entrance
- .21± Acre lot
- 14-16 Parking spaces (Shared)
- All public utilities serve the site
- Zoned R-3

**MIKI FOLSOM, CCIM**

**478.361.3036 Cell**

**mfolsom@cbcworldwide.com**



**COLDWELL BANKER  
COMMERCIAL**  
EBERHARDT & BARRY

**990 RIVERSIDE DR • MACON, GA 31201 • 478.746.8171 • CBCMACON.COM**

Created 10/17/23

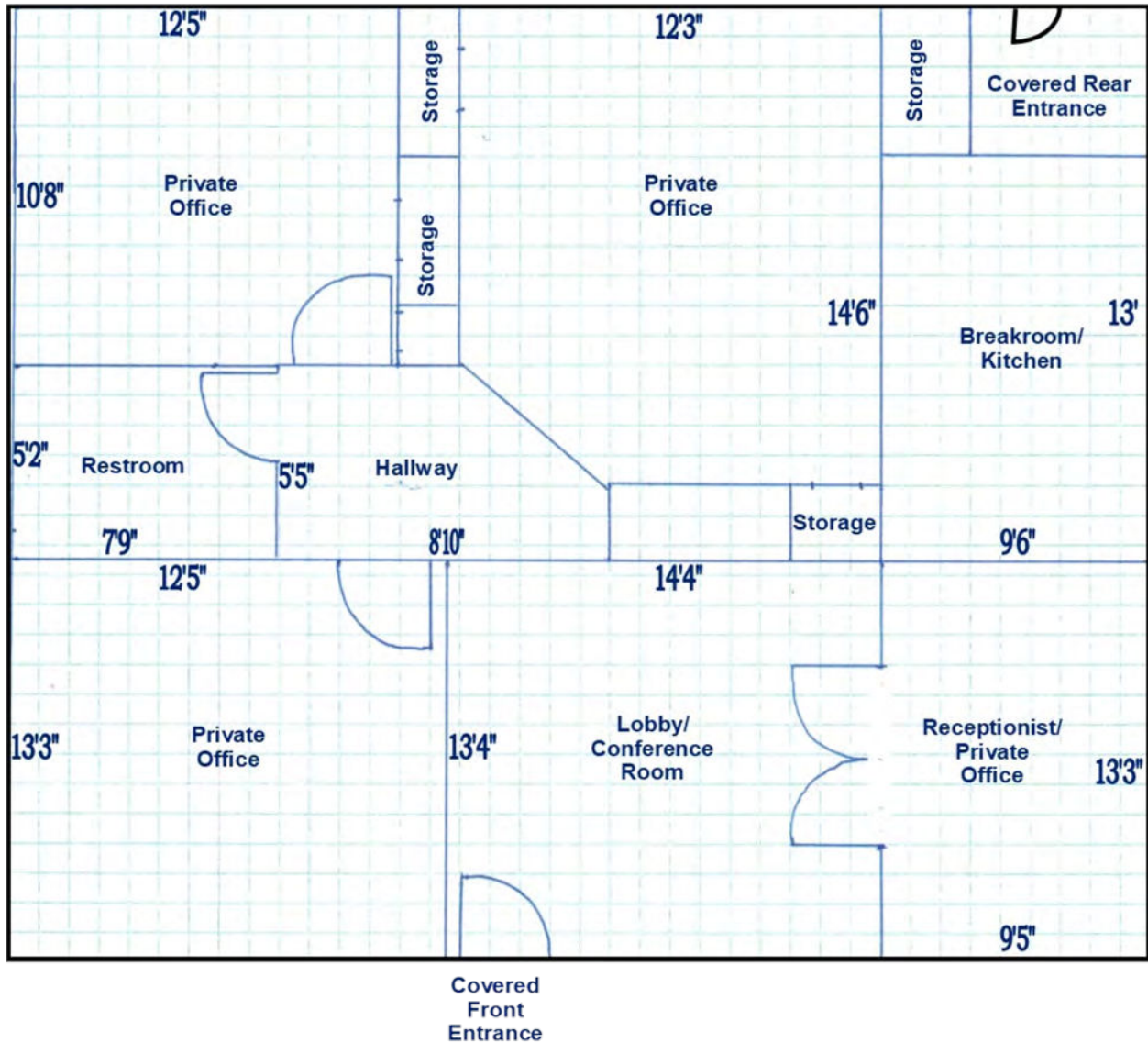
# LEASE

# OFFICE

2948 Vineville Avenue - Macon, Bibb County, GA 31204

## FLOOR PLAN

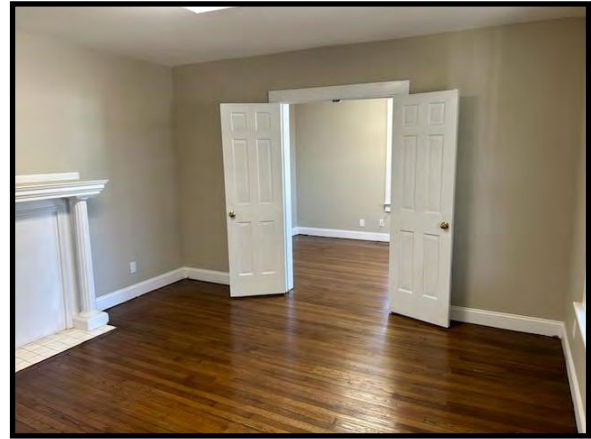
Parking



# LEASE

OFFICE

2948 Vineville Avenue - Macon, Bibb County, GA 31204



# LEASE

OFFICE

2948 Vineville Avenue - Macon, Bibb County, GA 31204



MIKI FOLSOM, CCIM  
478.361.3036 Cell  
mfolsom@cbcworldwide.com

990 RIVERSIDE DR • MACON, GA 31201 • 478.746.8171 • CBCMACON.COM

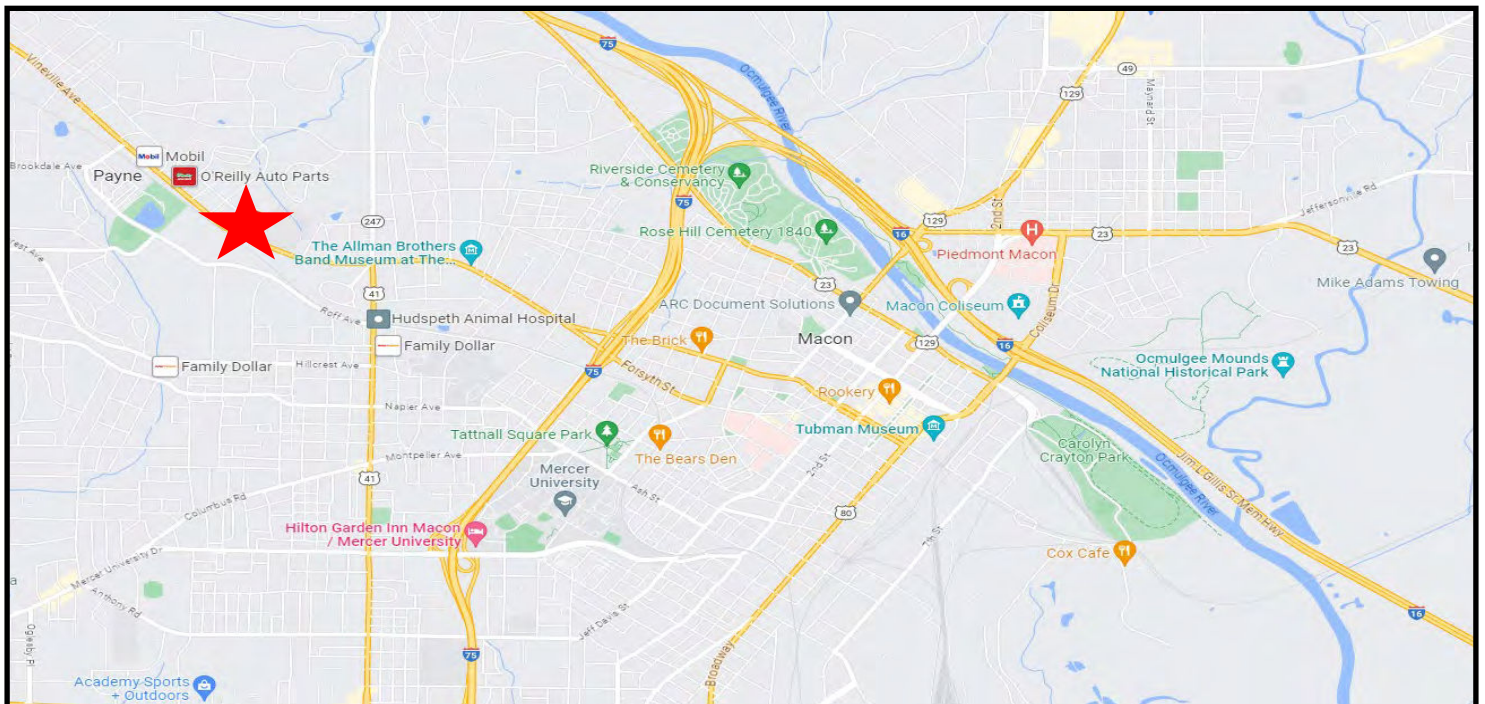


COLDWELL BANKER  
**COMMERCIAL**  
EBERHARDT & BARRY

# LEASE

OFFICE

2948 Vineville Avenue - Macon, Bibb County, GA 31204



**MIKI FOLSOM, CCIM**  
 478.361.3036 Cell  
 mfolson@cbcworldwide.com



**COLDWELL BANKER  
 COMMERCIAL**  
 EBERHARDT & BARRY

990 RIVERSIDE DR • MACON, GA 31201 • 478.746.8171 • CBCMACON.COM