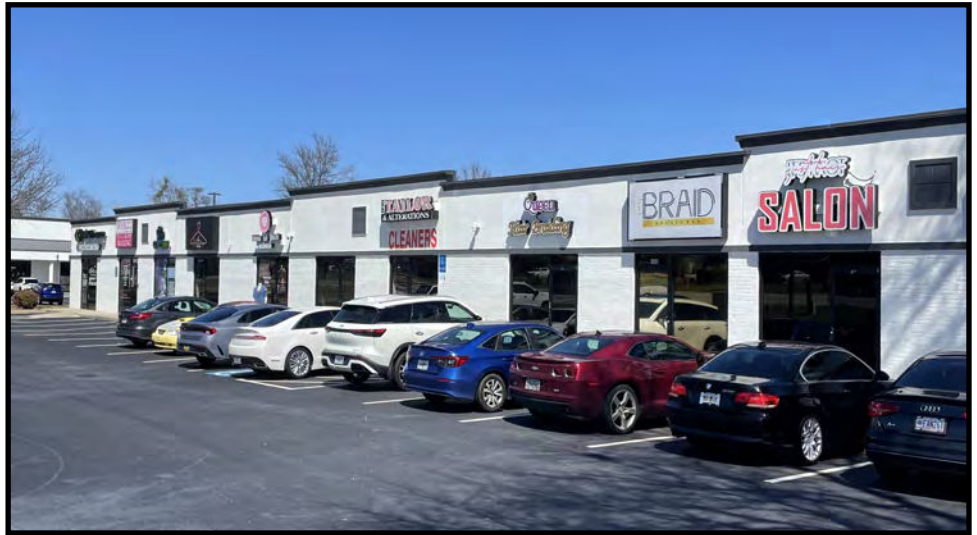


LEASE

HOUSTON COMMONS - STOREFRONT RETAIL / OFFICE
154 S HOUSTON LAKE ROAD - WARNER ROBINS, GEORGIA 31088



LOCATION OVERVIEW

- Located near the signalized intersection of Watson Boulevard & S Houston Lake Rd.
- Average Daily Traffic Count: 30,300 VPD
- 3.5 miles from Houston Healthcare
- 6.5 miles to Robins Air Force Base

**CONTACT AGENT
FOR LEASE RATE**

PROPERTY OVERVIEW

- Suite 1100 - 850± SF
(Floor Plan Page 2)
 - Showroom
 - Large work area
 - Shop with roll-up door
 - Restroom
- Minimum three (3) year lease
- Signage available on the façade and pylon
- Zoned C2

TENANT LIST

Access Loan Company
Diamond In The Rough
Glitz & Glamour
House of Fadez Barbershop
It's Knot Just Hair
Kim's Tailor
Loc Shop Hair Salon
Reboot Hub
Waxology by Sedra

BRADLEY "BRAD" BLOODWORTH
478.951.3712 Cell
bradley.bloodworth@cbcgeorgia.com

990 RIVERSIDE DRIVE • MACON, GA 31201 • 478.746.8171 • CBCMACON.COM



**COLDWELL BANKER
COMMERCIAL**
EBERHARDT & BARRY

Created 3/11/25

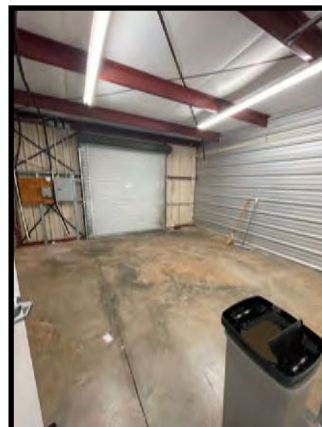
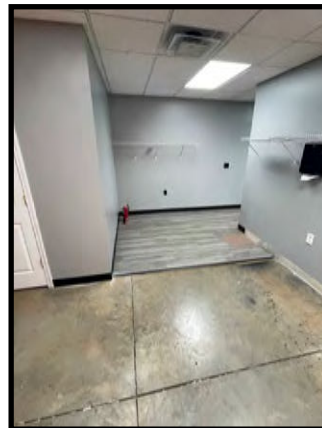
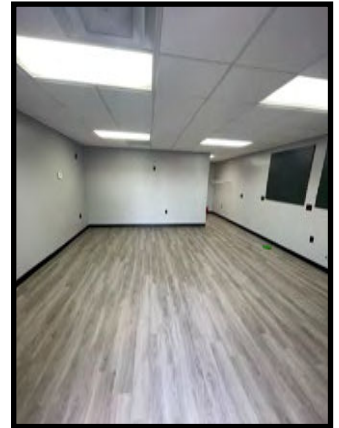
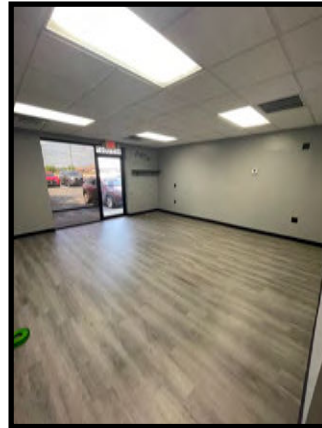
LEASE

HOUSTON COMMONS - STOREFRONT RETAIL / OFFICE
154 S HOUSTON LAKE ROAD - WARNER ROBINS, GEORGIA 31088

SUITE 1100 - 850± SF



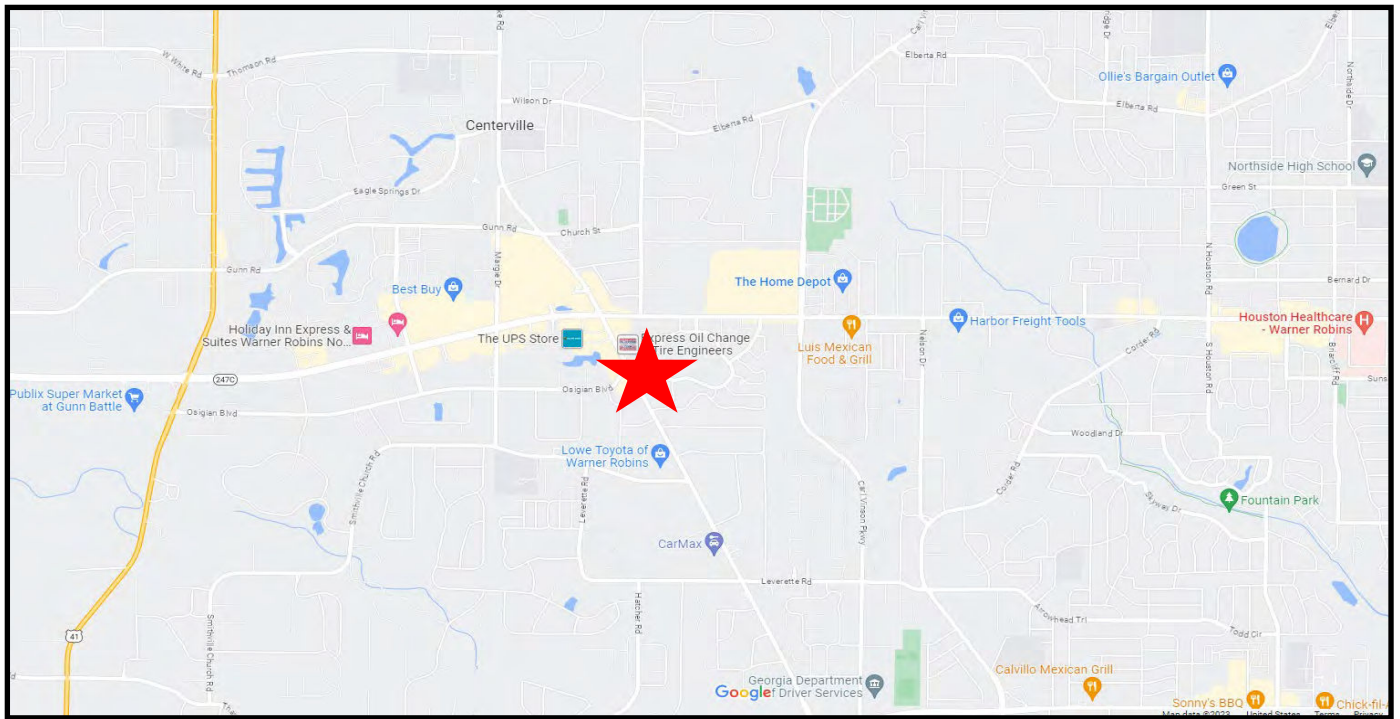
**CONTACT AGENT
FOR LEASE RATE**



LEASE

HOUSTON COMMONS - STOREFRONT RETAIL / OFFICE

154 S HOUSTON LAKE ROAD - WARNER ROBINS, GEORGIA 31088



BRADLEY "BRAD" BLOODWORTH
478.951.3712 Cell
bradley.bloodworth@cbcgeorgia.com



**COLDWELL BANKER
COMMERCIAL**
EBERHARDT & BARRY

DEMOGRAPHICS - ONE MILE

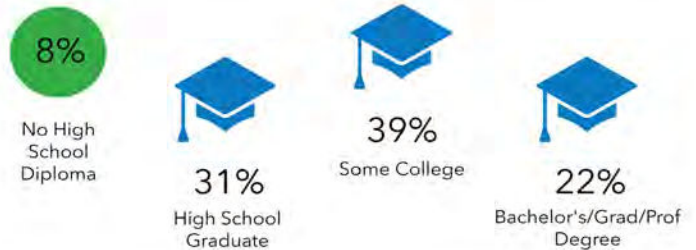
154 S Houston Lake Rd, Warner Robins, Georgia, 31088 (1 mile)
 154 S Houston Lake Rd, Warner Robins, Georgia, 31088
 Ring of 1 mile

Prepared by Esri
 Latitude: 32.61372
 Longitude: -83.67948

KEY FACTS



EDUCATION



BUSINESS



EMPLOYMENT



INCOME



2024 Households By Income (Esri)

The largest group: \$50,000 - \$74,999 (20.5%)

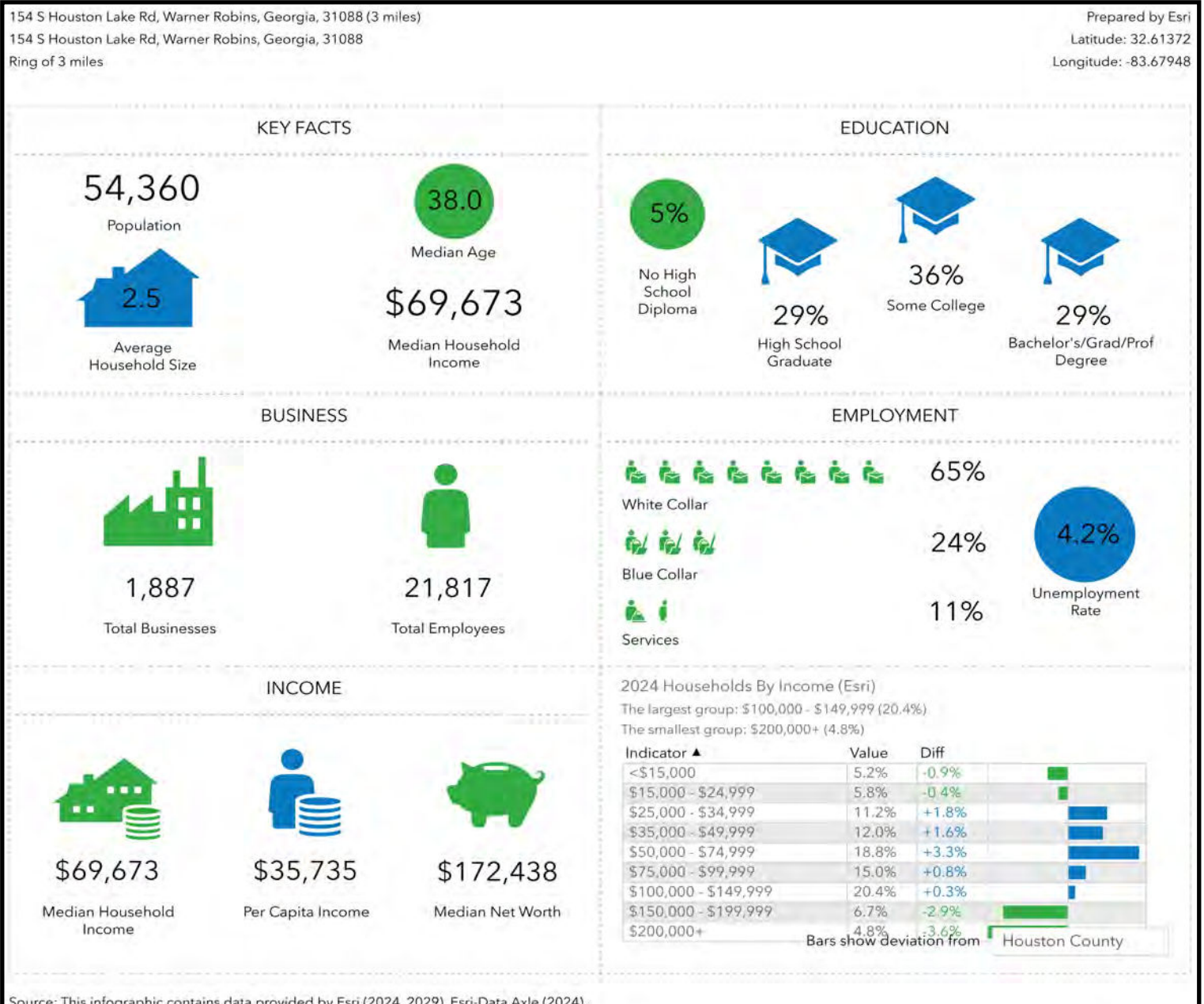
The smallest group: \$200,000+ (1.9%)

Indicator ▲	Value	Diff	
<\$15,000	7.4%	+1.3%	
\$15,000 - \$24,999	8.3%	+2.1%	
\$25,000 - \$34,999	16.7%	+7.3%	
\$35,000 - \$49,999	11.5%	+1.1%	
\$50,000 - \$74,999	20.5%	+5.0%	
\$75,000 - \$99,999	13.8%	-0.4%	
\$100,000 - \$149,999	15.8%	-4.3%	
\$150,000 - \$199,999	4.1%	-5.5%	
\$200,000+	1.9%	-6.5%	

Bars show deviation from Houston County

Source: This infographic contains data provided by Esri (2024, 2029), Esri-Data Axle (2024)

DEMOGRAPHICS - THREE MILE



DEMOGRAPHICS - FIVE MILE

