

SALE

PROFESSIONAL MEDICAL OFFICE BUILDING
6010 Lakeside Commons Drive - Macon, Bibb County, GA 31210

PRICE REDUCED



**11,034± SF PROFESSIONAL OFFICE BUILDING /
MEDICAL AMBULATORY SURGERY CENTER**

FOUR (4) SUITES

REDUCED SALES PRICE: ~~\$2,999,000~~ \$2,850,000

STEPHANIE FOLSOM, CCIM
EXCLUSIVE AGENT
478.361.8259 CELL
stephanie@cbcgeorgia.com



**COLDWELL BANKER
COMMERCIAL**
EBERHARDT & BARRY

990 RIVERSIDE DRIVE
MACON, GA 31201
478.746.8171
CBCMACON.COM

Revised 6/7/24

SALE

PROFESSIONAL MEDICAL OFFICE BUILDING

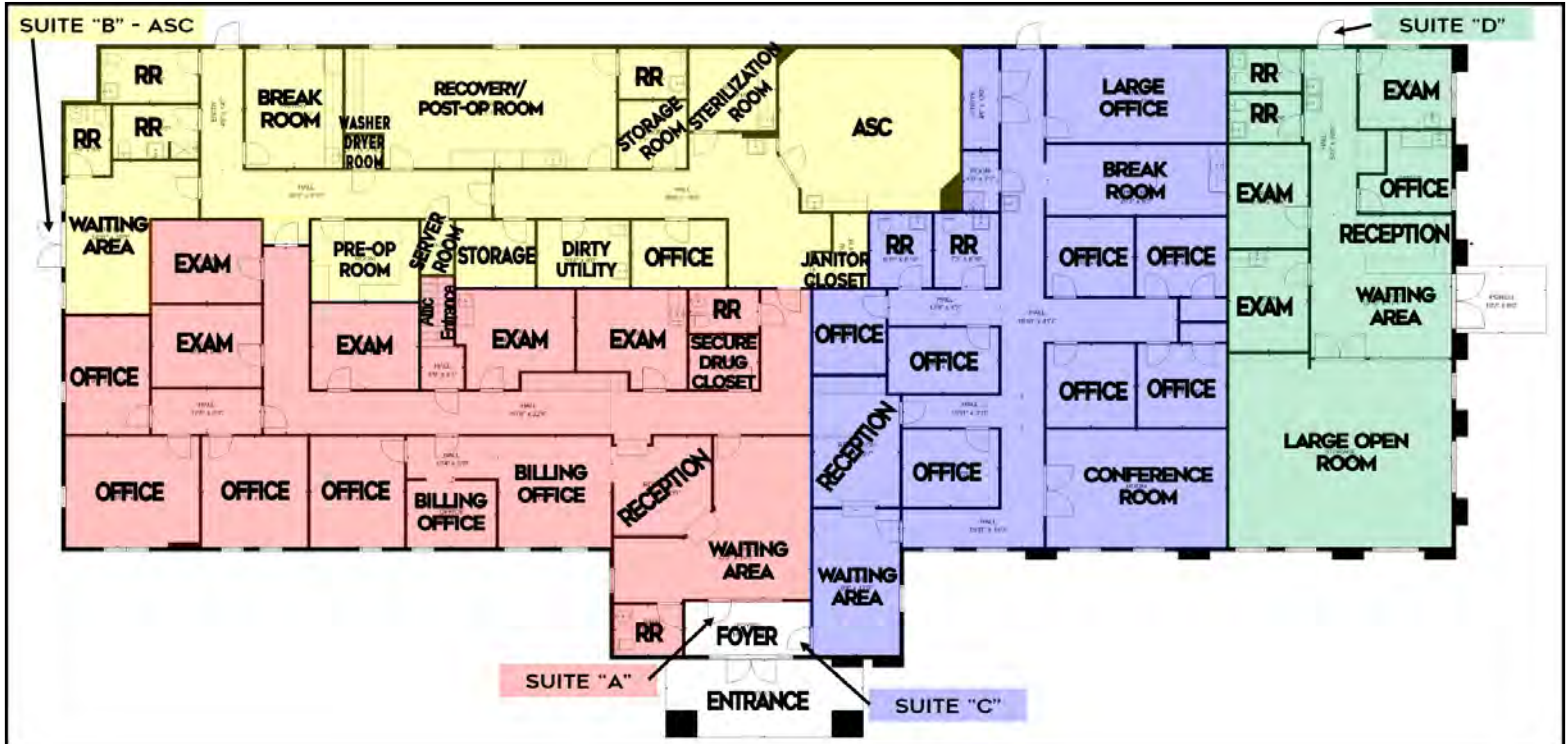
6010 Lakeside Commons Drive - Macon, Bibb County, GA 31210

PROPERTY VIDEO:	https://www.youtube.com/watch?v=sgw2LBzAUqo
LOCATION:	<ul style="list-style-type: none">• Strategically located off Interstate 75 & Bass Road• North Macon's premier office location• Walking distance to shopping, restaurants and lodging• Minutes from The Shoppes at River Crossing
BUILDING INFORMATION: FLOOR PLAN PAGE 7	11,034± SF Multi-Tenant Professional Office Building (Exterior measurement) Suites "A" & "B" currently occupied by Owner and will be relocating <ul style="list-style-type: none">- Suite "A": 3,140± SF* - Medical Office w/Attic Storage- Suite "B": 2,599± SF* - Ambulatory Surgery Center w/Porte Cochère- Suite "C": 2,645± SF* - Vacant - New flooring & paint- Suite "D": 1,578± SF* - Vacant - New flooring & paint *Interior measurement
SITE INFORMATION:	<ul style="list-style-type: none">• 0.339 Acres• Common area parking lot
COMMON AREA:	\$950.00/monthly paid to SPP Commercial for parking lot maintenance, outdoor utilities, landscaping and taxes & insurance
YEAR BUILT:	2006; custom built by Seller
ROOF:	Original shingled roof
HVAC:	<ul style="list-style-type: none">• Suites A&B: Served by five (5) units:<ul style="list-style-type: none">- Carrier 2.5 ton (2006)- Carrier 2 ton (2024)- Carrier 3 ton (2006)- Carrier 4 ton (2006)- Carrier 5 ton (2006)• Suite C: Served by two (2) units:<ul style="list-style-type: none">- Carrier 4 ton (2006)- Carrier 2.5 ton (2008)• Suite D: Served by one (1) unit:<ul style="list-style-type: none">- Carrier 4 ton (2008)
FIRE PROTECTION:	Wet sprinkled
PARKING:	Adequate, shared common area parking lot
ZONING:	PDE
PROPERTY TAXES:	\$12,605.95 (2023)
REDUCED SALES PRICE: \$2,999,000 \$2,850,000	

SALE

PROFESSIONAL MEDICAL OFFICE BUILDING 6010 Lakeside Commons Drive - Macon, Bibb County, GA 31210

FLOOR PLAN



SUITE "A"	SUITE "B" (ASC)	SUITE "C"	SUITE "D"
Waiting Area	Waiting Area	Waiting Area	Waiting Area
Receptionist	Pre-Op	Receptionist	Receptionist
Four (4) Private Offices	Recovery / Post-Op	Seven (7) Private Offices	Large Open Room
Billing Offices	ASC	One (1) Large Office	One (1) Private Office
Five (5) Exam Rooms	One Private Office	Conference Room	Three (3) Exam Rooms
Secure Drug Closet	Four (4) Restrooms	Break Room	Two (2) Restrooms
Two (2) Restrooms	Break Room	Two (2) Restrooms	
	Washer/Dryer Room		
	Sterilization Room		
	Dirty Utility		
	Two (2) Storage Rooms		
	Server Room		

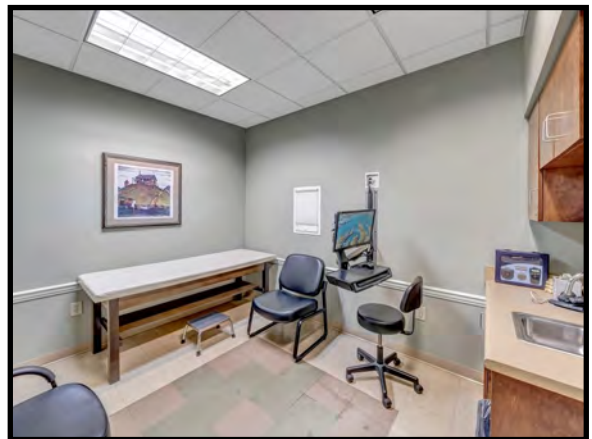


SALE

PROFESSIONAL MEDICAL OFFICE BUILDING

6010 Lakeside Commons Drive - Macon, Bibb County, GA 31210

PHOTOS - SUITE "A"



STEPHANIE FOLSOM, CCIM
478.361.8259 Cell
stephanie@cbcgeorgia.com

990 RIVERSIDE DRIVE • MACON, GA 31201 • 478.746.8171 • CBCMACON.COM



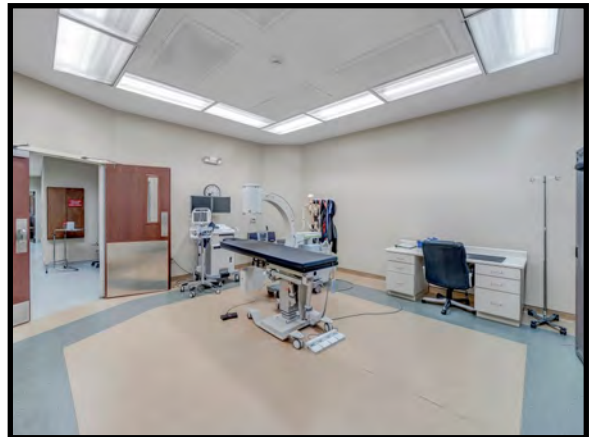
**COLDWELL BANKER
COMMERCIAL**
EBERHARDT & BARRY

SALE

PROFESSIONAL MEDICAL OFFICE BUILDING

6010 Lakeside Commons Drive - Macon, Bibb County, GA 31210

PHOTOS - SUITE "B" (ASC)



STEPHANIE FOLSOM, CCIM
478.361.8259 Cell
stephanie@cbcgeorgia.com

990 RIVERSIDE DRIVE • MACON, GA 31201 • 478.746.8171 • CBCMACON.COM



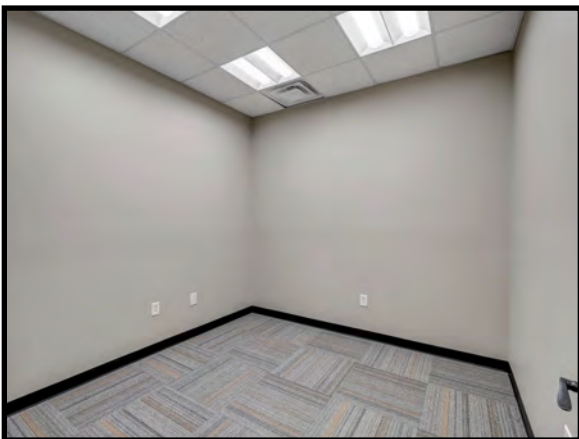
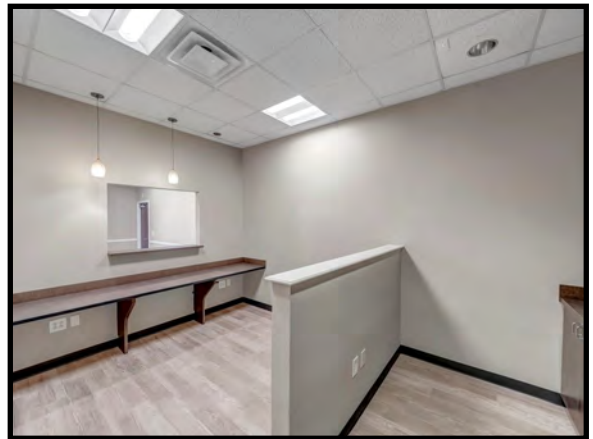
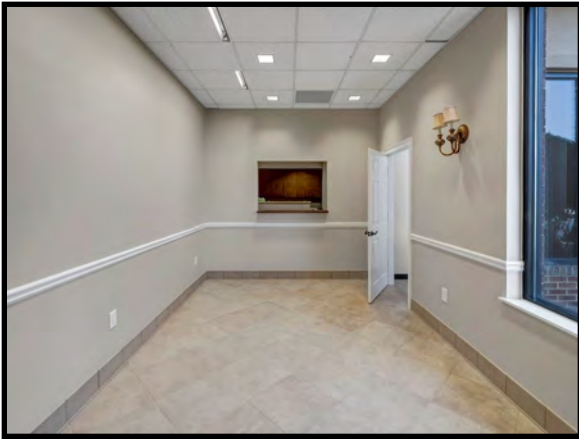
**COLDWELL BANKER
COMMERCIAL**
EBERHARDT & BARRY

SALE

PROFESSIONAL MEDICAL OFFICE BUILDING

6010 Lakeside Commons Drive - Macon, Bibb County, GA 31210

PHOTOS - SUITE "C"



STEPHANIE FOLSOM, CCIM
478.361.8259 Cell
stephanie@cbcgeorgia.com

990 RIVERSIDE DRIVE • MACON, GA 31201 • 478.746.8171 • CBCMACON.COM



**COLDWELL BANKER
COMMERCIAL**
EBERHARDT & BARRY

SALE

PROFESSIONAL MEDICAL OFFICE BUILDING
6010 Lakeside Commons Drive - Macon, Bibb County, GA 31210



STEPHANIE FOLSOM, CCIM
478.361.8259 Cell
stephanie@cbcgeorgia.com



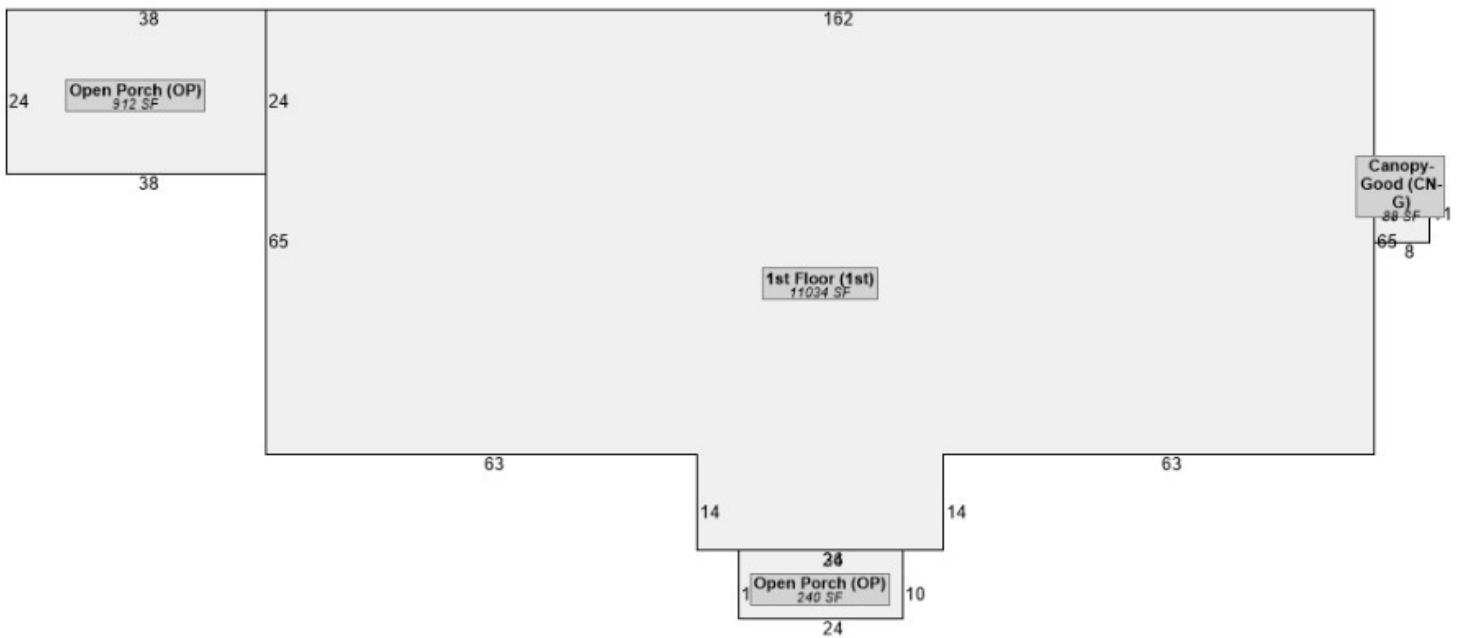
**COLDWELL BANKER
COMMERCIAL**
EBERHARDT & BARRY

990 RIVERSIDE DRIVE • MACON, GA 31201 • 478.746.8171 • CBCMACON.COM

SALE

PROFESSIONAL MEDICAL OFFICE BUILDING
6010 Lakeside Commons Drive - Macon, Bibb County, GA 31210

**MACON-BIBB COUNTY TAX ASSESSOR
BUILDING SKETCH
11,034± SF EXTERIOR DIMENSIONS**



SALE

PROFESSIONAL MEDICAL OFFICE BUILDING
6010 Lakeside Commons Drive - Macon, Bibb County, GA 31210

AERIAL PARCEL MAP



STEPHANIE FOLSOM, CCIM
478.361.8259 Cell
stephanie@cbcgeorgia.com



**COLDWELL BANKER
COMMERCIAL**
EBERHARDT & BARRY

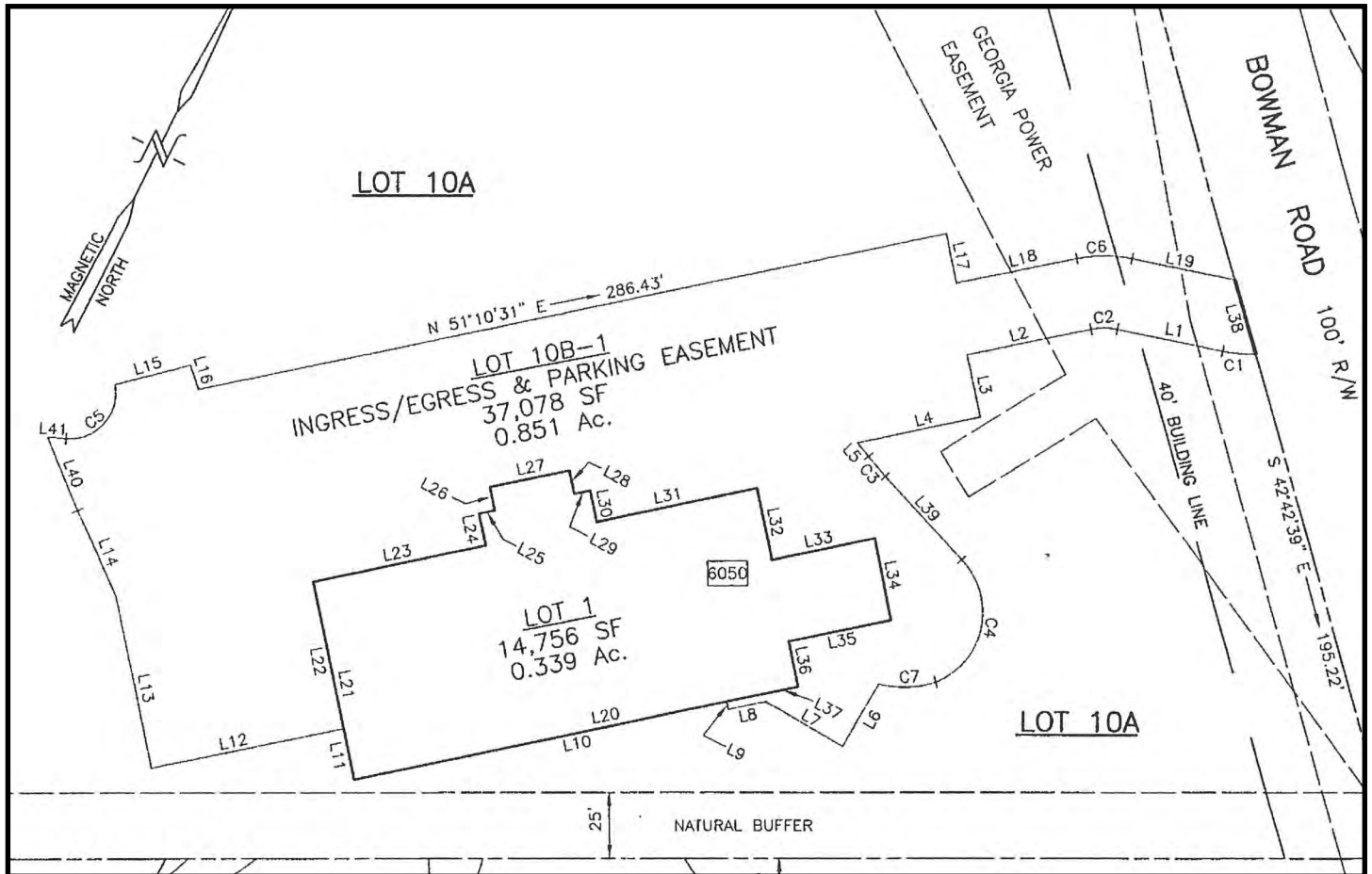
990 RIVERSIDE DRIVE • MACON, GA 31201 • 478.746.8171 • CBCMACON.COM

SALE

PROFESSIONAL MEDICAL OFFICE BUILDING

6010 Lakeside Commons Drive - Macon, Bibb County, GA 31210

PROPERTY PLAT



STEPHANIE FOLSOM, CCIM
478.361.8259 Cell
stephanie@cbcgeorgia.com

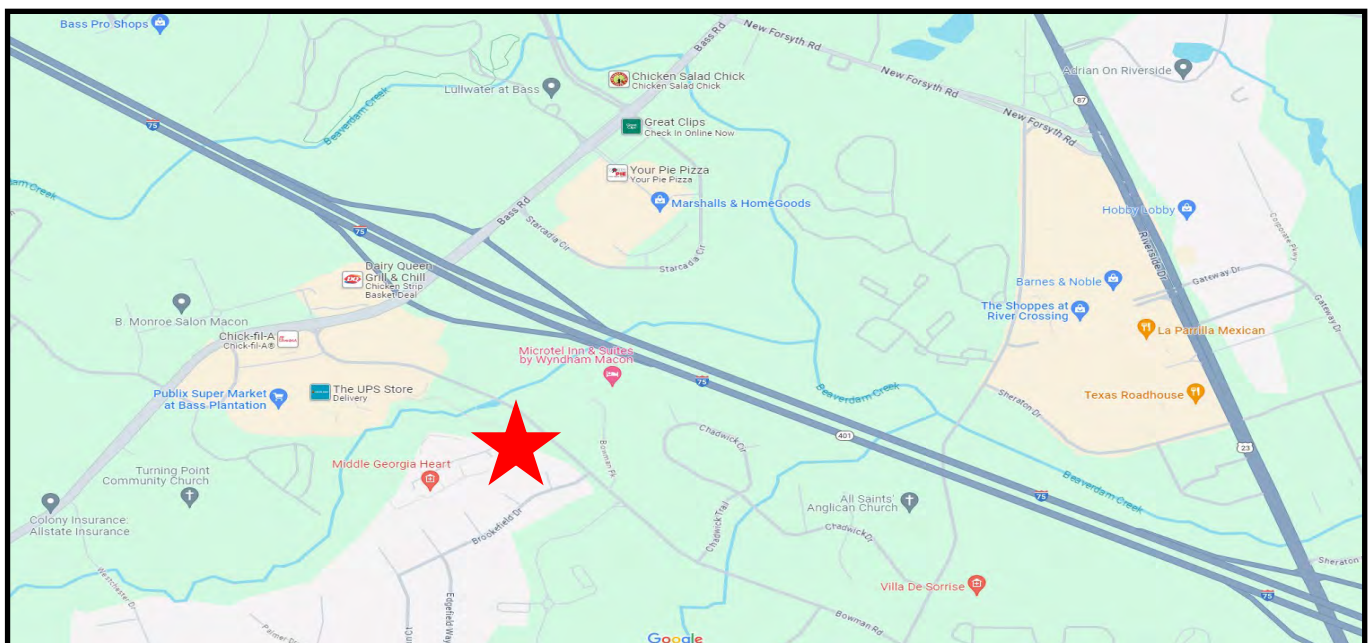


COLDWELL BANKER
COMMERCIAL
EBERHARDT & BARRY

990 RIVERSIDE DRIVE • MACON, GA 31201 • 478.746.8171 • CBCMACON.COM

SALE

PROFESSIONAL MEDICAL OFFICE BUILDING 6010 Lakeside Commons Drive - Macon, Bibb County, GA 31210



STEPHANIE FOLSOM, CCIM
478.361.8259 Cell
stephanie@cbcgeorgia.com

990 RIVERSIDE DRIVE • MACON, GA 31201 • 478.746.8171 • CBCMACON.COM



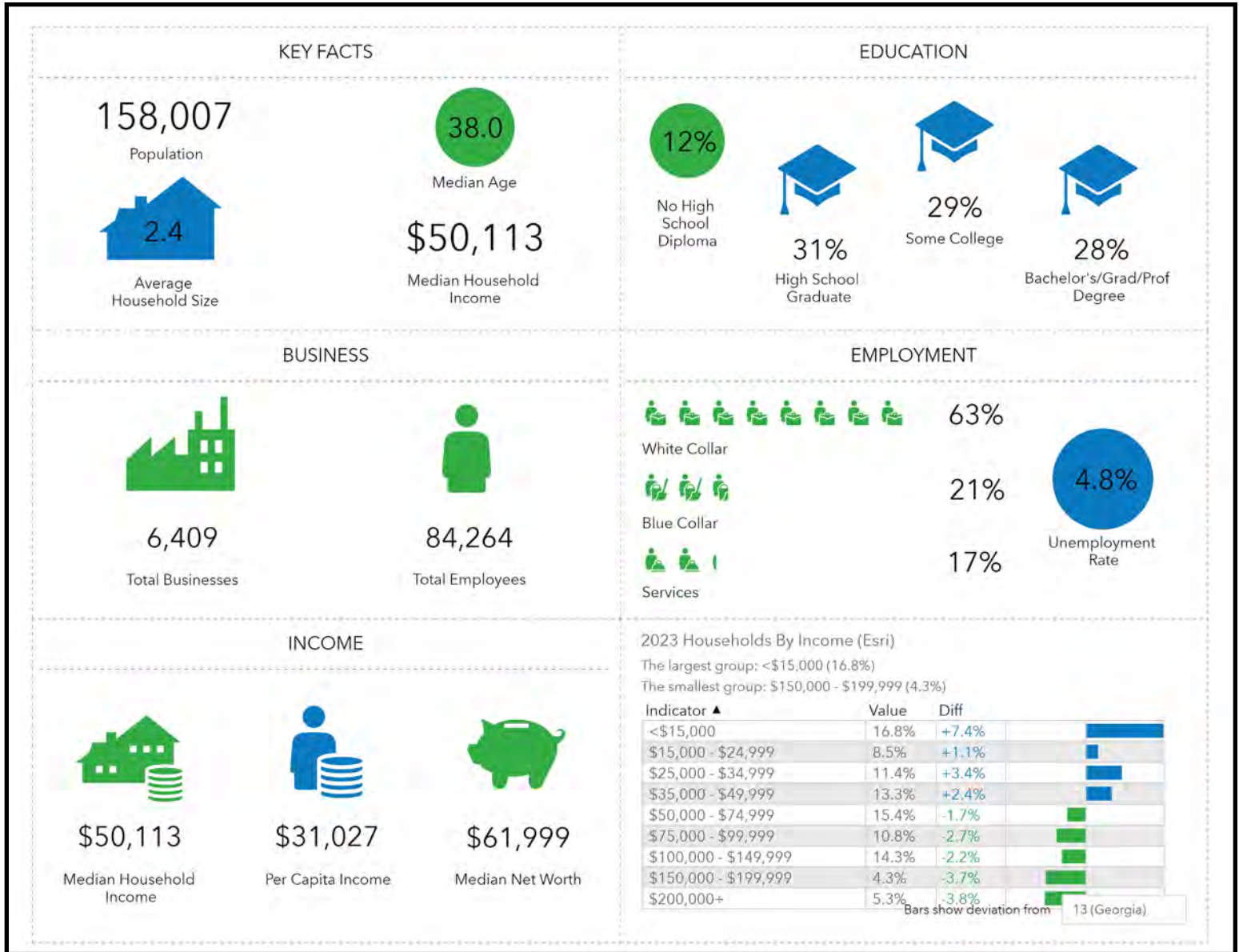
**COLDWELL BANKER
COMMERCIAL**
EBERHARDT & BARRY

SALE

PROFESSIONAL MEDICAL OFFICE BUILDING

6010 Lakeside Commons Drive - Macon, Bibb County, GA 31210

DEMOGRAPHICS - BIBB COUNTY



STEPHANIE FOLSOM, CCIM
 478.361.8259 Cell
 stephanie@cbcgeorgia.com



**COLDWELL BANKER
 COMMERCIAL**
 EBERHARDT & BARRY

990 RIVERSIDE DRIVE • MACON, GA 31201 • 478.746.8171 • CBCMACON.COM