

# LEASE / BTS

4 OUTPARCELS -  
1.15 AC - 8.88 AC

**5250 SARDIS CHURCH RD**  
MACON, GA 31216

**GROUND LEASE OR BTS**



**PATRICK BARRY**  
ASSOCIATE BROKER  
pbarry@cbcgeorgia.com  
Cell: (478) 718-1806  
Office: (478) 746-8171  
990 Riverside Drive  
Macon GA 31201



**COLDWELL BANKER  
COMMERCIAL**  
EBERHARDT & BARRY

The property information herein is derived from various sources that may include, but not be limited to, county records and may include approximations. Although the information is believed to be accurate, it is not warranted and you should not rely upon it without personal verification. ©2024 Coldwell Banker. All Rights Reserved. Coldwell Banker Commercial® and the Coldwell Banker Commercial logo are trademarks of Coldwell Banker Real Estate LLC. The Coldwell Banker® System is comprised of company owned offices which are owned by a subsidiary of Anywhere Advisors LLC and franchised offices which are independently owned and operated. The Coldwell Banker System fully supports the principles of the Equal Opportunity Act. 24GVKB\_CBC\_3/24

# SALE

5250 SARDIS CHURCH RD  
MACON GA 31216

## OFFERING SUMMARY

Lot Sizes:	Outparcel 1 - 1.32 acres Outparcel 2 - 1.15 acres Outparcel 3 - 3.00 acres Outparcel 4 - 8.88 acres
Lease Rate:	Call Agent for Pricing
Property Development:	7-Eleven being built on ~5 acres of property. Expected Q4 of 2025.
Traffic Count:	~11, 200 VPD - Sardis Church Rd. ~ 92,300 VPD - I-75
2023 Property Taxes:	~\$1,181.37
Zoning:	PDI
Class:	C-5
Utilities:	All public utilities service the site.

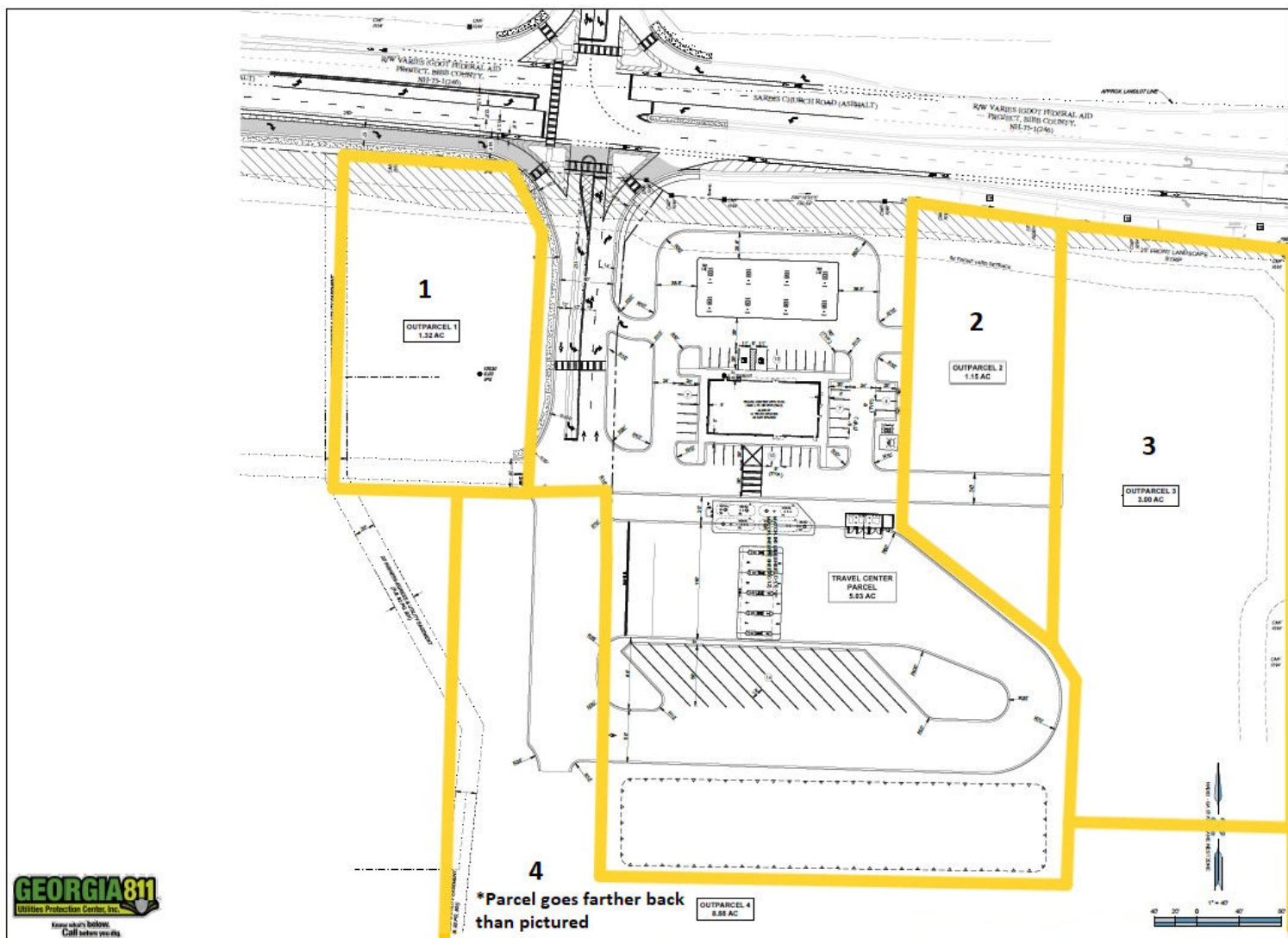
**PATRICK BARRY**  
ASSOCIATE BROKER  
pbarry@cbcgeorgia.com  
Cell: (478) 718-1806



# SALE

5250 SARDIS CHURCH RD  
MACON GA 31216

## OUTPARCELS



Please note Outparcel 4 goes farther back than shown on the site plan

**PATRICK BARRY**  
ASSOCIATE BROKER  
pbarry@cbcgeorgia.com  
Cell: (478) 718-1806

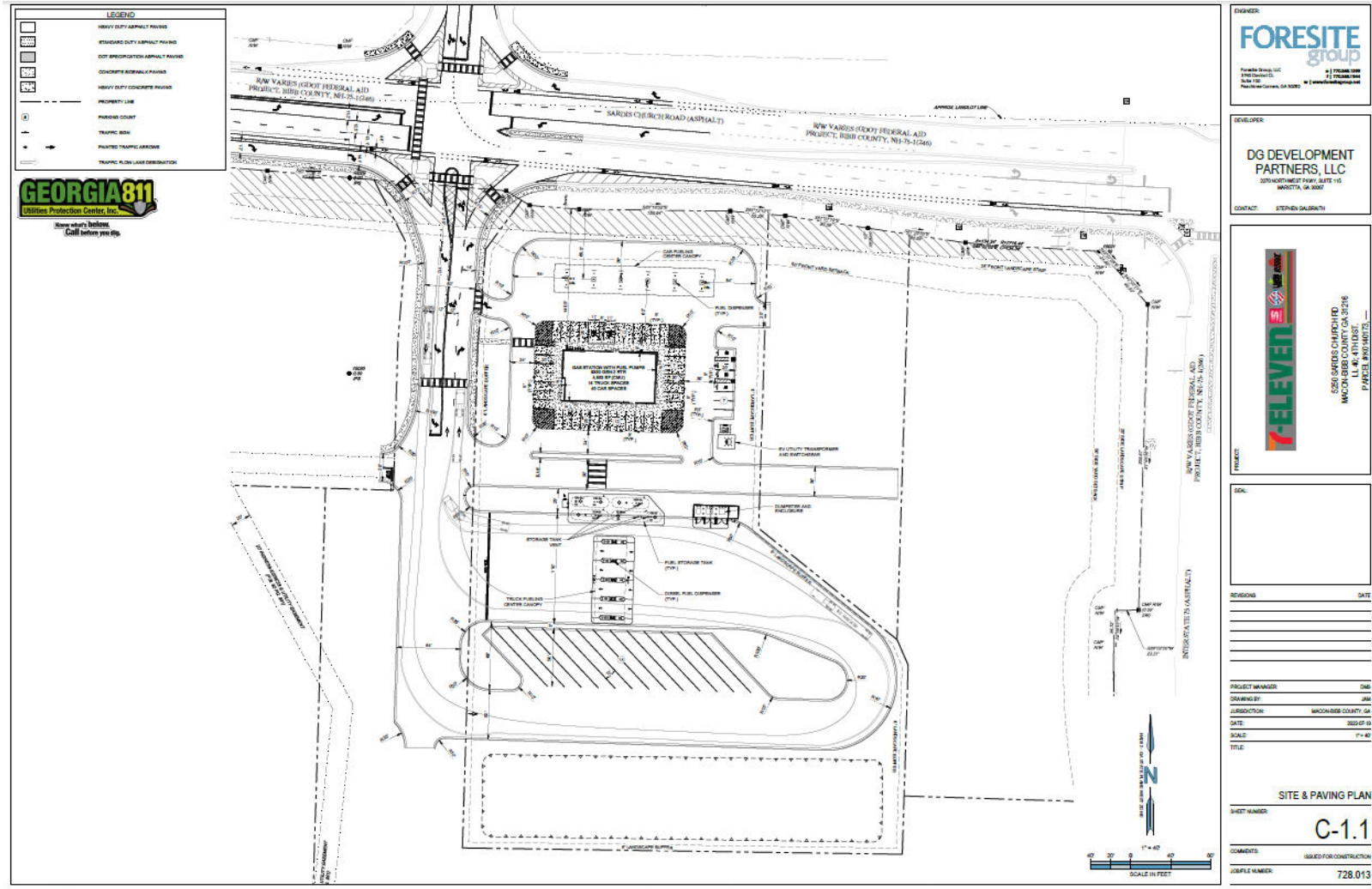


**COLDWELL BANKER  
COMMERCIAL**  
EBERHARDT & BARRY

# SALE

5250 SARDIS CHURCH RD  
MACON GA 31216

## UPDATED SITE PLAN



**PATRICK BARRY**  
ASSOCIATE BROKER  
pbarry@cbcgeorgia.com  
Cell: (478) 718-1806



**COLDWELL BANKER  
COMMERCIAL**  
EBERHARDT & BARRY

## OFFERING SUMMARY

### PROPERTY OVERVIEW:

- 4 Outparcels fit for QSR, Hotel, Self-Storage and/or Industrial
- Property is just south of Macon, GA between Macon and Warner Robins.
- I-75 interchange at Sardis Church Rd is the connection between I-75 & Middle GA Regional Airport.
- Macon's I-75 Industrial Park connects to Sardis Church Road interchange with businesses including Tyson Foods, FedEx, Tractor Supply, QuikTrip, Yancey Brothers, YKK, and Amazon.
- 7-Eleven will be breaking ground ~February 2025 and expected to open Q4 of 2025.
- Love's Travel Center is directly across Sardis Church Road from the Subject Property.
- Amazon distribution center (1 million SF ; ~1,000 jobs) is across I-75 from the subject property.

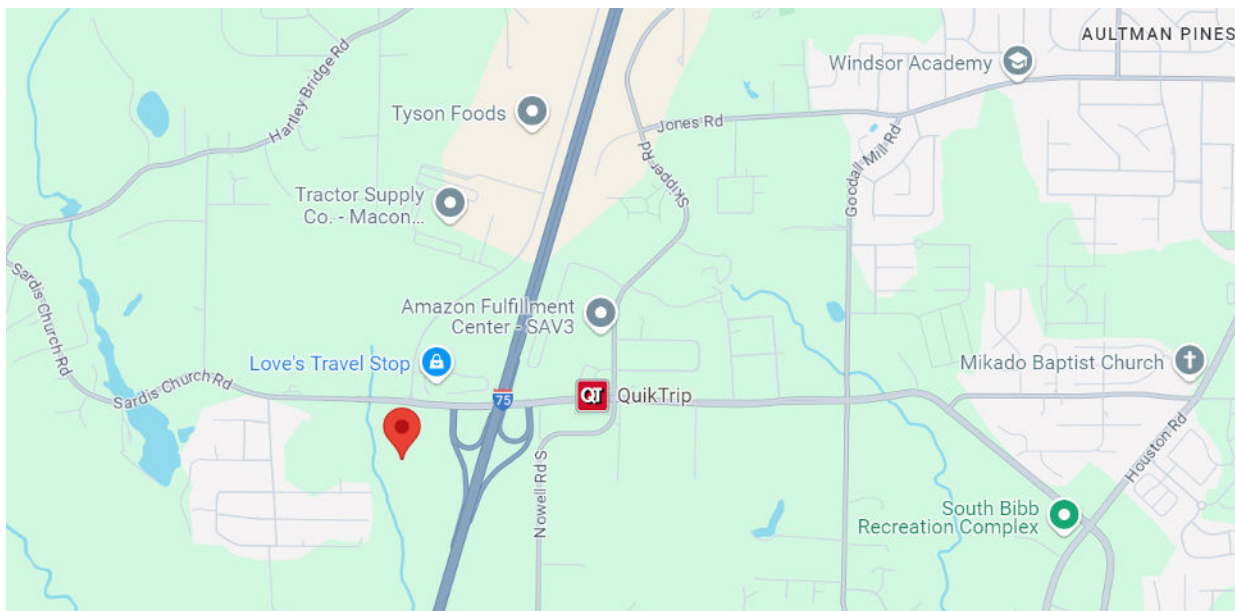
**PATRICK BARRY**  
ASSOCIATE BROKER  
pbarry@cbcgeorgia.com  
Cell: (478) 718-1806



**COLDWELL BANKER  
COMMERCIAL**  
EBERHARDT & BARRY

# SALE

5250 SARDIS CHURCH RD  
MACON GA 31216



**PATRICK BARRY**  
ASSOCIATE BROKER  
pbarry@cbcgeorgia.com  
Cell: (478) 718-1806



**COLDWELL BANKER  
COMMERCIAL**  
EBERHARDT & BARRY

## 5 MILE RADIUS

### KEY FACTS

28,661

Population



Average Household Size

42.1

Median Age

\$68,649

Median Household Income

### BUSINESS



768

Total Businesses



8,365

Total Employees

### INCOME



\$68,649

Median Household Income



\$31,394

Per Capita Income



\$235,839

Median Net Worth

### EDUCATION

11%

No High School Diploma



35%

High School Graduate



34%

Some College



20%

Bachelor's/Grad/Prof Degree

### EMPLOYMENT



60%

White Collar



26%

Blue Collar



Services

14%



Unemployment Rate

### 2024 Households By Income (Esri)

The largest group: \$100,000 - \$149,999 (24.4%)

The smallest group: \$200,000+ (4.2%)

Indicator ▲	Value	Diff	
<\$15,000	8.1%	-7.9%	<div style="width: 100%; height: 10px; background-color: green;"></div>
\$15,000 - \$24,999	8.9%	-0.7%	<div style="width: 100%; height: 10px; background-color: green;"></div>
\$25,000 - \$34,999	9.1%	-2.0%	<div style="width: 100%; height: 10px; background-color: green;"></div>
\$35,000 - \$49,999	10.8%	-1.2%	<div style="width: 100%; height: 10px; background-color: green;"></div>
\$50,000 - \$74,999	16.3%	-0.4%	<div style="width: 100%; height: 10px; background-color: green;"></div>
\$75,000 - \$99,999	12.9%	+2.3%	<div style="width: 100%; height: 10px; background-color: blue;"></div>
\$100,000 - \$149,999	24.4%	+10.1%	<div style="width: 100%; height: 10px; background-color: blue;"></div>
\$150,000 - \$199,999	5.4%	+2.1%	<div style="width: 100%; height: 10px; background-color: blue;"></div>

Bars show deviation from

Bibb County ▼