

LEASE

WIMBISH MIDTOWN PLAZA SHOPPING CENTER
881 WIMBISH ROAD, MACON, BIBB COUNTY, GA 31210



**LEASE RATE: \$2,325.00/MONTH
(INCLUDES CAM)**

LOCATION OVERVIEW

- Located in North Macon at the busy signalized intersection of Riverside Drive and Wimbish Road
- 5 miles from Downtown Macon

TENANT LIST

- Mikata Japanese Steakhouse
- Fitness Xtreme
- Twin Cuts Barber Shop
- Brenda's Salon
- Coast to Coast Medical Transportation

PROPERTY OVERVIEW

- 1,975± SF Storefront Restaurant / Retail
 - Outside seating/ dining
- Formerly Aroma Essence Southern Cuisine
- Traffic Count: 24,400± AVG VPD
- Pylon signage and on façade of building
- Asphalt paved parking lot
- Zoned C4

ARTHUR P. BARRY III
478.731.8000 Cell
abarry@cbcgeorgia.com

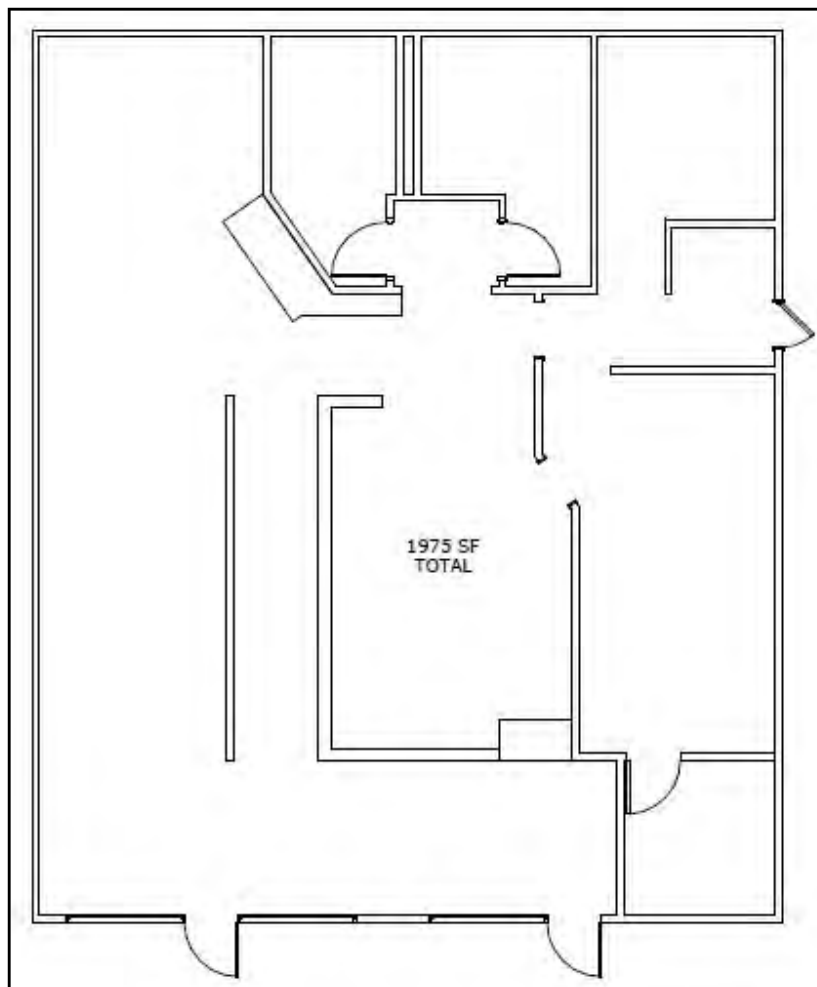
990 RIVERSIDE DRIVE • MACON, GA 31201 • 478.746.8171 • CBCMACON.COM



**COLDWELL BANKER
COMMERCIAL**
EBERHARDT & BARRY

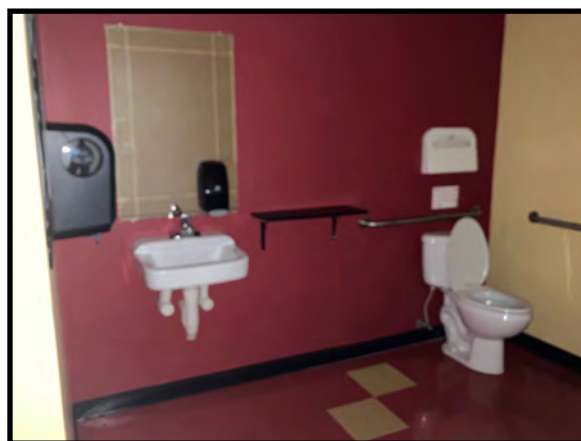
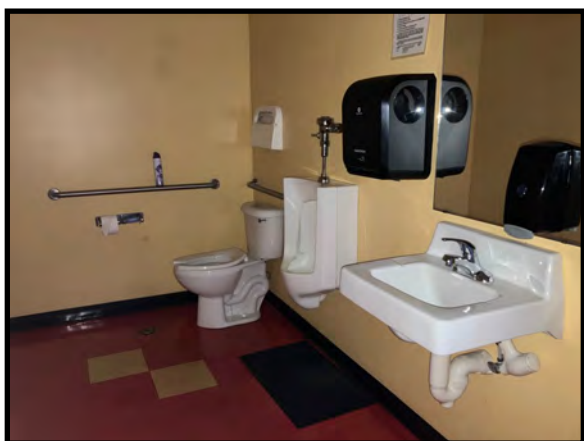
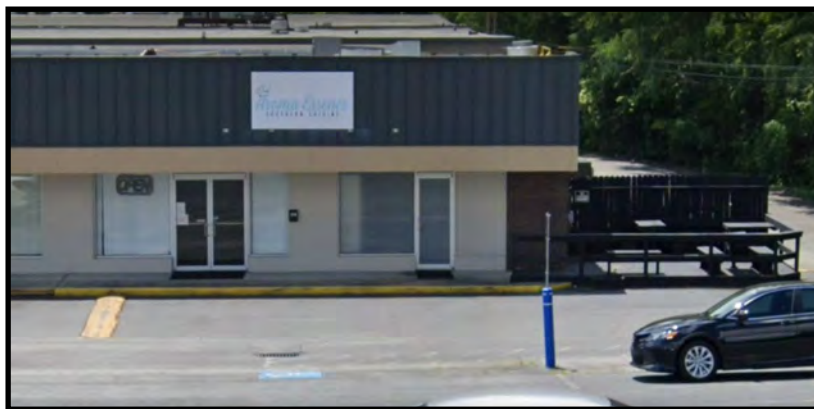
Revised 9/10/24

FLOOR PLAN



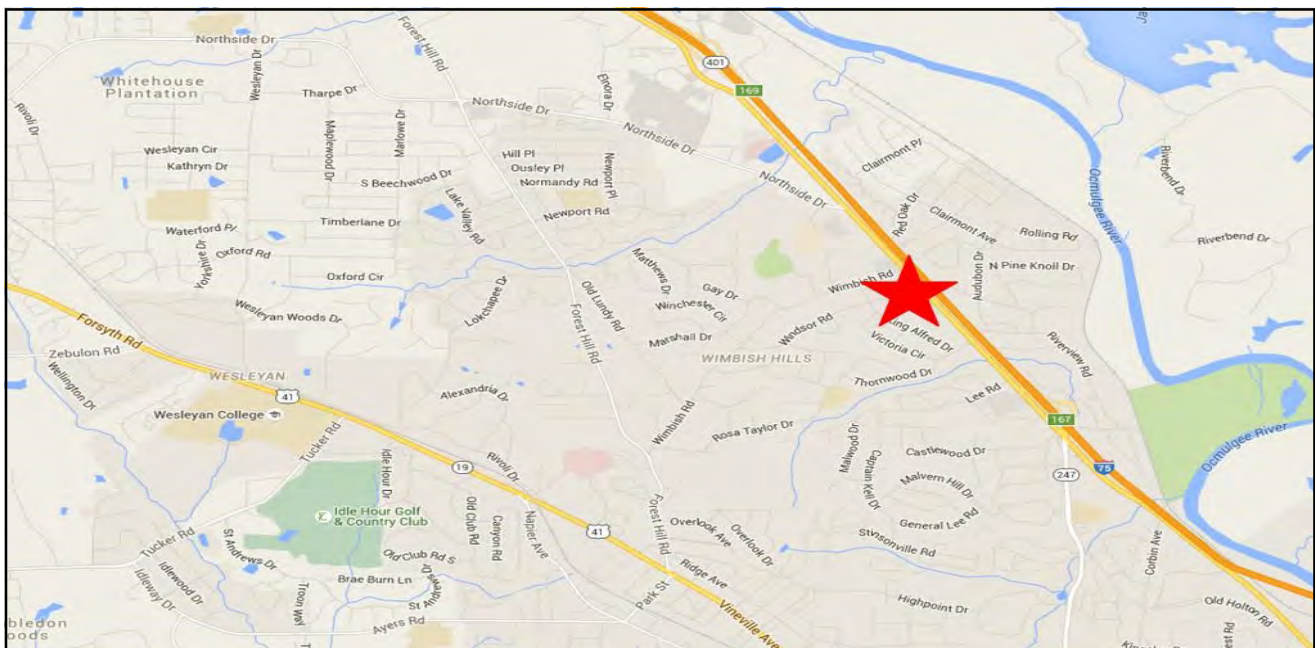
LEASE

WIMBISH MIDTOWN PLAZA SHOPPING CENTER
881 WIMBISH ROAD, MACON, BIBB COUNTY, GA 31210



LEASE

WIMBISH MIDTOWN PLAZA SHOPPING CENTER 881 WIMBISH ROAD, MACON, BIBB COUNTY, GA 31210



4

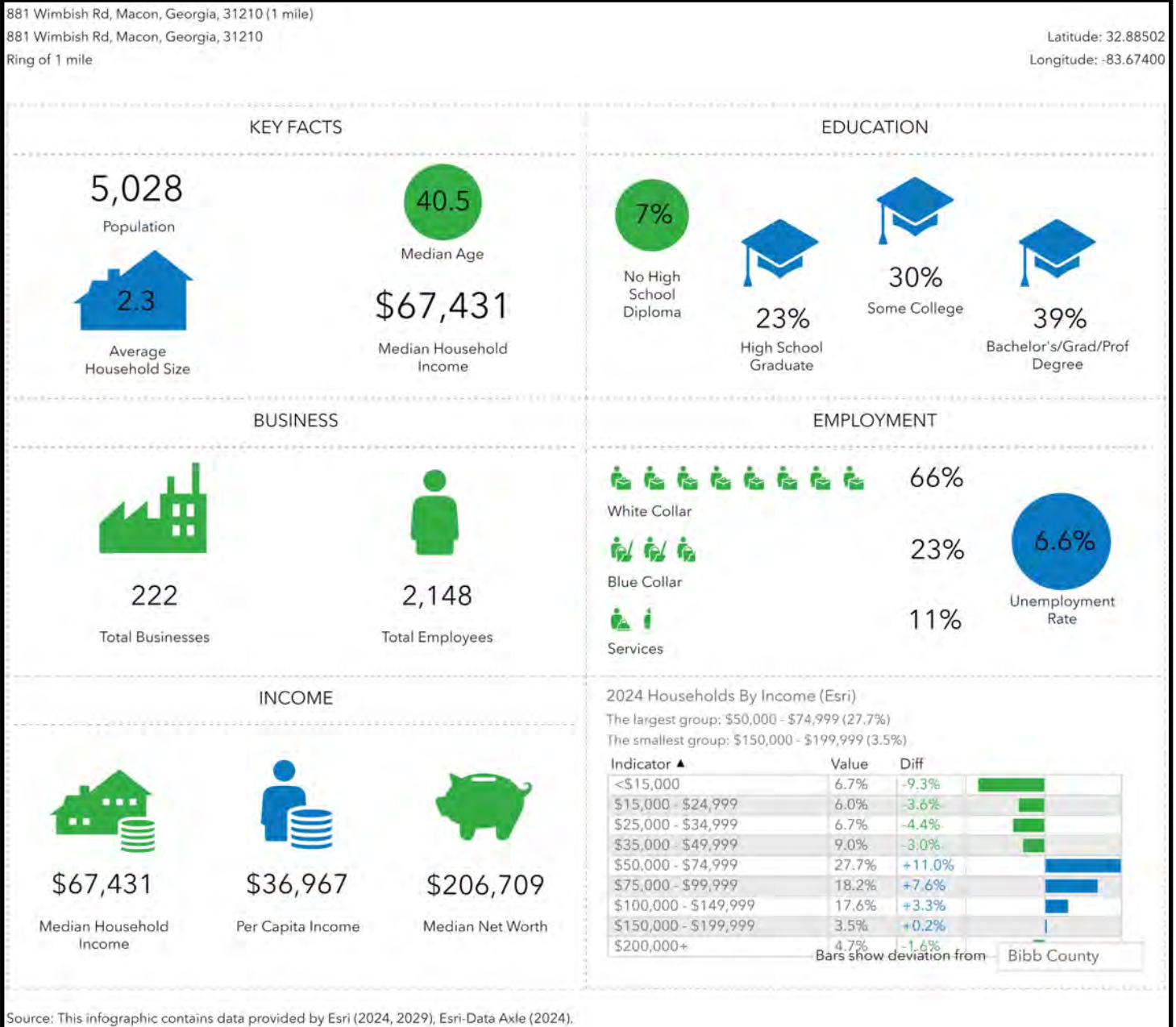
ARTHUR P. BARRY III
478.731.8000 Cell
abarry@cbcgeorgia.com

990 RIVERSIDE DRIVE • MACON, GA 31201 • 478.746.8171 • CBCMACON.COM



**COLDWELL BANKER
COMMERCIAL**
EBERHARDT & BARRY

DEMOGRAPHICS - ONE MILE



DEMOGRAPHICS - THREE MILE

881 Wimbish Rd, Macon, Georgia, 31210 (3 miles)
881 Wimbish Rd, Macon, Georgia, 31210
Ring of 3 miles

Latitude: 32.88502
Longitude: -83.67400

KEY FACTS

31,093

Population



Average
Household Size

38.6

Median Age

\$61,621

Median Household
Income

EDUCATION

7%

No High
School
Diploma



24%

High School
Graduate



28%

Some College



41%

Bachelor's/Grad/Prof
Degree

BUSINESS



1,485

Total Businesses



14,474

Total Employees

EMPLOYMENT



White Collar

67%



Blue Collar

19%



Services

14%

4.3%

Unemployment
Rate

INCOME



\$61,621

Median Household
Income



\$38,668

Per Capita Income



\$119,361

Median Net Worth

2024 Households By Income (Esri)

The largest group: \$50,000 - \$74,999 (21.4%)

The smallest group: \$150,000 - \$199,999 (4.0%)

Indicator ▲	Value	Diff	
<\$15,000	10.8%	-5.2%	
\$15,000 - \$24,999	7.7%	-1.9%	
\$25,000 - \$34,999	9.9%	-1.2%	
\$35,000 - \$49,999	9.4%	-2.6%	
\$50,000 - \$74,999	21.4%	+4.7%	
\$75,000 - \$99,999	13.0%	+2.4%	
\$100,000 - \$149,999	15.9%	+1.6%	
\$150,000 - \$199,999	4.0%	+0.7%	
\$200,000+	7.9%	+1.6%	

Bars show deviation from - Bibb County

Source: This infographic contains data provided by Esri (2024, 2029), Esri-Data Axle (2024).

DEMOGRAPHICS - FIVE MILE

881 Wimbish Rd, Macon, Georgia, 31210 (5 miles)
881 Wimbish Rd, Macon, Georgia, 31210
Ring of 5 miles

Latitude: 32.88502
Longitude: -83.67400

KEY FACTS

82,528

Population



Average
Household Size

37.4

Median Age

\$48,986

Median Household
Income

EDUCATION

11%

No High
School
Diploma



29%

High School
Graduate



26%

Some College



34%

Bachelor's/Grad/Prof
Degree

BUSINESS



4,727

Total Businesses



53,949

Total Employees

EMPLOYMENT



White Collar

67%



Blue Collar

17%



Services

16%

5.1%

Unemployment
Rate

INCOME



\$48,986

Median Household
Income



\$33,797

Per Capita Income



\$44,173

Median Net Worth

2024 Households By Income (Esri)

The largest group: <\$15,000 (18.8%)

The smallest group: \$150,000 - \$199,999 (3.2%)

Indicator ▲	Value	Diff	
<\$15,000	18.8%	+2.8%	
\$15,000 - \$24,999	9.5%	-0.1%	
\$25,000 - \$34,999	11.2%	+0.1%	
\$35,000 - \$49,999	10.9%	-1.1%	
\$50,000 - \$74,999	16.5%	-0.2%	
\$75,000 - \$99,999	10.4%	-0.2%	
\$100,000 - \$149,999	11.9%	-2.4%	
\$150,000 - \$199,999	3.2%	-0.1%	
\$200,000+	7.6%	+1.3%	

Bars show deviation from — Bibb County

Source: This infographic contains data provided by Esri (2024, 2029), Esri-Data Axle (2024).